

Festive Season Celebration

DECEMBER 13, 2025 – JANUARY 2, 2026





Complimentary Beach Equipment

Stand Up Paddleboards, Snorkel Gear, Bodyboards & Kayaks available.

Beach Club Hours: 7:00am-6:00pm daily

Mauna Kea is proud to offer all beach activities as a complimentary experience for our hotel guests. Advance reservations may be made at the Beach Club Hale.

Highlighted Activities:

SEASIDE YOGA

8:00am, Daily | Beach Club

The art and science of yoga offers enormous therapeutic benefits to its practitioners, working with the body, heart, mind, and spirit. This seaside experience is now offered complimentary for hotel guests.

MANTA SNORKEL ADVENTURE

6:00pm, 6:45pm & 7:30pm

Small group snorkel with Manta Researcher James L. Wing. (\$)

Limited space available. Advance registration required with concierge.

Mālama Kauna'oa

BEACH CLEAN UP | TUESDAYS, 8:30AM

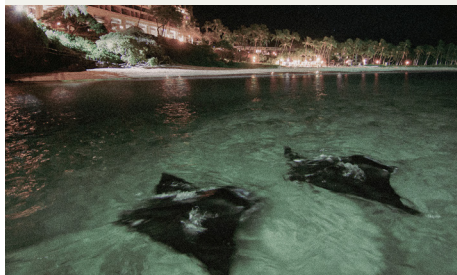
Join us for a weekly beach cleanup to mālama, care for, Kauna'oa Bay and keep it nani kōkī, supremely beautiful.

3RD TEE GOLF BALL DIVE

WEDNESDAYS, 7:30AM

Help clean up the seafloor by removing golf balls with an experienced waterman. Snorkels and masks provided. For advanced swimmers.

For your safety, all ocean-related activities are subject to favorable ocean conditions.



Calendar Legend

Meeting Locations

- * Discovery Center Lanai (Beach Wing, 2nd Floor)
- ** Beach Club Hale (Kauna'oa Bay, Near Hau Tree)
- *** Hale Ho'omaha (South End, Beach Wing)
- **** 'Ulu Garden (in Front of the Tennis Pro Shop)

(\$) Fee Applies

Keiki Club

Register for daily programs at Discovery Center or dial ext. 5774 to speak with the Activities team.

Limited space available. Min 24-hr advance registration required.

Special Holiday Dining

For reservations, call Concierge, ext. 5707.

For regular dining hours see page 10.

Special Holiday Activity

We invite everyone to join us for memorable experiences throughout the season of celebration.

Discover Our Offerings



Take this brochure with you on your phone, or explore more experiences by scanning the QR code.



Beach Chair Guidelines

Beach chairs are 1st come, 1st served.

Unattended personal belongings left on chairs will be cleared after one hour except between 12pm and 2pm. Lawn & Pool Cabanas may be reserved for daily rental. Inquire with beach or pool staff for availability.

Limit 2 towels per person

Saturday	Sunday	Monday	Tuesday
DECEMBER 13	DECEMBER 14	DECEMBER 15	DECEMBER 16
<p>6:30am Sunrise Guided Hike: Stories by the Sea*</p> <p>7:30am Complimentary Canoe Paddle**</p> <p>8:00am Seaside Yoga**</p> <p>8:00am Ku'i 'Ai: Taro or Breadfruit Poi Making****</p>	<p>6:00am E Ala E, Sunrise Ritual • Volleyball Court Area</p> <p>7:30am Complimentary Canoe Paddle**</p> <p>8:00am Seaside Yoga**</p> <p>8:00am Kūpe'e Kukui: Traditional Candlenut Adornment*</p>	<p>6:30am Sunrise Guided Hike: Stories by the Sea*</p> <p>7:30am Complimentary Canoe Paddle**</p> <p>8:00am Seaside Yoga**</p> <p>8:00am 'Ōlelo: Beginners Hawaiian Language*</p>	<p>6:00am E Ala E, Sunrise Ritual • Volleyball Court Area</p> <p>7:00am SUP Yoga** • Weather Permitting</p> <p>8:00am Seaside Yoga**</p> <p>8:30am Imu Presentation • Lū'au Grounds</p>
<p>9:00am Keiki Club Seashell Saturday (\$)</p>	<p>9:00am Keiki Club Starlight Sunday (\$)</p>	<p>9:00am Keiki Club Manta Monday (\$)</p>	<p>9:00am Keiki Club Tapa Tuesday (\$)</p>
<p>10:00am Mea Pā'ani: Hawaiian Lawn Games***</p> <p>10:00am Mauna Kea Art Tour • Main Lobby</p> <p>10:00am Koi Fish Feeding • Koi Ponds, Lobby Level</p> <p>10:45am Complimentary Canoe Paddle**</p> <p>12:00pm Pū Kani: Blowing of the Conch Shell***</p>	<p>10:00am Na Hulu: Feather Hairpiece*</p> <p>10:00am Koi Fish Feeding • Koi Ponds, Lobby Level</p> <p>10:45am Complimentary Canoe Paddle**</p> <p>12:00pm Pareo: Learn to Tie a Sarong*</p>	<p>10:00am Lei Lā'i: Ti-Leaf Lei Making*</p> <p>10:00am Golf Tips with the Pro • Golf Pro Shop</p> <p>10:00am Koi Fish Feeding • Koi Ponds, Lobby Level</p> <p>10:45am Complimentary Canoe Paddle**</p> <p>12:00pm Oli: Traditional Hawaiian Chant*</p>	<p>10:00am Na Hulu: Feather Hairpiece*</p> <p>10:00am Koi Fish Feeding • Koi Ponds, Lobby Level</p> <p>10:45am Complimentary Canoe Paddle**</p> <p>12:00pm Kūpe'e Kukui: Traditional Candlenut Adornment*</p>
<p>4:30pm Ignite: Jog & HIIT Fusion • Parker Cottage</p>	<p>4:30pm Coastal Core Flow • Parker Cottage</p>	<p>1:00pm KEIKI KALIKIMAKA Cookie Decorating*</p> <p>4:30pm Sunset Dance Beat • Parker Cottage</p> <p>5:30pm Manta Talks • Manta Point</p>	<p>1:00pm KEIKI KALIKIMAKA Shave Ice*</p> <p>4:30pm Sunset Guided Hike*</p> <p>5:10pm Lū'au Dinner & Show (\$) • Lū'au Grounds</p>
<p>6:00pm / 6:45pm 7:30pm Manta Snorkel Adventure (\$)**</p>	<p>6:00pm / 6:45pm 7:30pm Manta Snorkel Adventure (\$)**</p>	<p>6:00pm / 6:45pm 7:30pm Manta Snorkel Adventure (\$)**</p>	<p>6:00pm / 6:45pm 7:30pm Manta Snorkel Adventure (\$)**</p>

*Meet at Discovery Center Lanai. Located in the Beachfront Tower on Level 2.

Meet at Beach Club Hale. * Meet at the Hale Ho'omaha, south end of the Beachfront Tower.

****Meet at the 'Ulu Garden. Located in front of the Tennis Pro Shop.



Mauna Kea Golf Course

Play this award-winning course designed by Robert Trent Jones, Sr. in 1964 and updated for today's golfer by son Robert "Bobby" Trent Jones Jr. Sign up for a customized Trackman® Golf Lesson or Playing Lesson.

Pro Shop open daily 6:30am-5pm.
Ext. 5405.

Golf Tips with a Pro at Mauna Kea Pro Shop, 10:00am on Mondays and Wednesdays.

Mauna Kea Resort also boasts the Arnold Palmer/Ed Seay designed

Hapuna Golf Course

Pro Shop open daily 6:30am-5pm.
Ext. 3000

Now featuring newly renovated fairways and bunkers — and ocean views from every hole.

E Ala E: Cultural Sunrise Ritual

Welcome dawn's new light, reflect upon your moments of silence, your insights, your enlightenment of the new day. Join us in this brief but meaningful participatory cultural gathering and ready yourself to greet the sun.

6:00am on Sundays, Tuesdays and Thursdays
Volleyball Court Area, Except Holidays

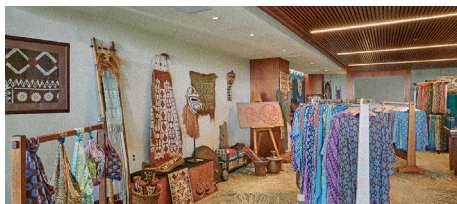


Keiki Kalikimaka

Join us for daily holiday fun, including cookie decorating, shave ice, face painting, and henna tattoos. There's something for every keiki to enjoy!

Meet at Discovery Center Lanai,
BeachFront Tower on Level 2

Available Daily, 1:00pm



Noa Noa Hawaii

Hawaiian and Pacific Island tapa and ethnic designs. Pop-Up Shop.

Located in the Promenade Atrium
10:00am - 6:00pm



Art Collection Tour
10am on Saturdays, Main Lobby

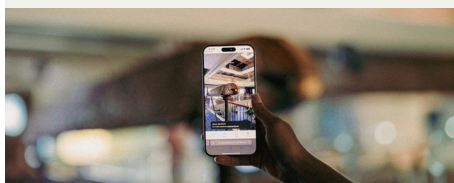
Discover the Art of Mauna Kea

Explore Mauna Kea's Art with Our
Web-Based Mobile App!

Scan the QR code, point your camera, and reveal details about each piece's inspiration and cultural significance.



Scan the QR Code and
Start Exploring Now!



Wednesday	Thursday	Friday	Saturday
DECEMBER 17	DECEMBER 18	DECEMBER 19	DECEMBER 20
<p>6:30am Sunrise Coastal Trail Jog*</p> <p>7:30am 3rd Tee Swim**</p> <p>8:00am Seaside Yoga**</p> <p>8:00am 'Ohe Kāpala: Traditional Bamboo Stamping*</p>	<p>6:00am E Ala E, Sunrise Ritual • Volleyball Court Area</p> <p>7:00am SUP Yoga** • Weather Permitting</p> <p>7:30am Complimentary Canoe Paddle**</p> <p>8:00am Seaside Yoga**</p> <p>8:00am 'Ōlelo: Beginners Hawaiian Language*</p>	<p>6:30am Secret Beach Hike & Stretch*</p> <p>8:00am Seaside Yoga**</p> <p>8:30am Imu Presentation • Lū'au Grounds</p>	<p>6:30am Sunrise Guided Hike: Stories by the Sea*</p> <p>7:30am Complimentary Canoe Paddle**</p> <p>8:00am Seaside Yoga**</p> <p>8:00am Ku'i 'Ai: Taro or Breadfruit Poi Making***</p>
<p>9:00am Keiki Club Wa'a Wednesday (\$)</p>	<p>9:00am Keiki Club Tidepool Thursday (\$)</p>	<p>9:00am Keiki Club Food Friday (\$)</p>	<p>9:00am Keiki Club Seashell Saturday (\$)</p>
<p>10:00am Niu Āpau: Things Made Of Niu (Coconut Frond)*</p> <p>10:00am Golf Tips with the Pro • Golf Pro Shop</p> <p>10:00am Koi Fish Feeding • Koi Ponds, Lobby Level</p> <p>10:45am Complimentary Canoe Paddle**</p> <p>12:00pm Na Hulu: Feather Hairpiece*</p>	<p>10:00am Oli: Traditional Hawaiian Chant*</p> <p>10:00am Koi Fish Feeding • Koi Ponds, Lobby Level</p> <p>10:45am Complimentary Canoe Paddle**</p> <p>12:00pm Pareo: Learn to Tie a Sarong*</p>	<p>10:00am HAWAIIAN KALIKIMAKA Hawaiian Angel*</p> <p>10:00am Koi Fish Feeding • Koi Ponds, Lobby Level</p> <p>10:45am Complimentary Canoe Paddle**</p> <p>12:00pm HAWAIIAN KALIKIMAKA Ornament Making*</p>	<p>10:00am Mea Pā'ani: Hawaiian Lawn Games***</p> <p>10:00am Mauna Kea Art Tour • Main Lobby</p> <p>10:00am Koi Fish Feeding • Koi Ponds, Lobby Level</p> <p>10:45am Complimentary Canoe Paddle**</p> <p>12:00pm Pū Kani: Blowing of the Conch Shell***</p>
<p>1:00pm KEIKI KALIKIMAKA Face Painting and Henna Tattoo*</p>	<p>1:00pm KEIKI KALIKIMAKA Cookie Decorating*</p>	<p>1:00pm KEIKI KALIKIMAKA Shave Ice*</p>	<p>1:00pm KEIKI KALIKIMAKA Face Painting and Henna Tattoo*</p>
<p>4:30pm Peak Power HIIT Nano • Parker Cottage</p>	<p>4:30pm Balance & Flow • Parker Cottage</p>	<p>4:30pm Sunset Slow Flow • Parker Cottage</p>	<p>4:30pm Ignite: Jog & HIIT Fusion • Parker Cottage</p>
<p>5:00-6:00pm BINGO • Kauna'oa Ballroom</p>		<p>5:10pm Lū'au Dinner & Show (\$) • Lū'au Grounds</p>	
<p>5:30pm Manta Talks • Manta Point</p>			<p>5:30 - 8:30pm Clambake (\$) • Beachfront Lawn</p>
<p>6:00pm / 6:45pm 7:30pm Manta Snorkel Adventure (\$)**</p>	<p>6:00pm / 6:45pm 7:30pm Manta Snorkel Adventure (\$)**</p>	<p>6:00pm / 6:45pm 7:30pm Manta Snorkel Adventure (\$)**</p>	<p>6:00pm / 6:45pm 7:30pm Manta Snorkel Adventure (\$)**</p>

*Meet at Discovery Center Lanai. Located in the Beachfront Tower on Level 2.

Meet at Beach Club Hale. * Meet at the Hale Ho'omaha, south end of the Beachfront Tower.

****Meet at the 'Ulu Garden. Located in front of the Tennis Pro Shop.

Seaside Tennis Club

Features nine tennis courts and eight pickleball courts! Court use, adult clinics, round robins, lessons and match arranging.

Pro Shop open daily 7:00am-5:00pm. Ext. 5420

TENNIS

Mixed Round Robin 3:30pm, Sundays

Mens Round Robin 3:30pm, Tuesdays

Womens Round Robin 3:30pm, Tuesdays

PICKLEBALL

Round Robin 8:00am & 9:00am,

Mondays and Wednesdays



Mandara Spa

Spa Indulgence

**TREAT YOURSELF TO RELAXATION
WITH A \$75 SHOPPING SPREE**

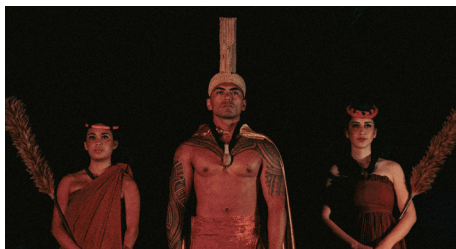
**Spend \$275 in services and receive
a \$75 product shopping spree.**

Located Ground Level by the pool.



**To learn about our spa or to
book your services scan the
QR code or dial ext. 5630.**

Restrictions may apply.



Lū'au

Indelible memories are made at the edge of the ocean when the sun goes down and firelight erupts to a Polynesian beat.

The island's best dancers and musicians perform, and Mauna Kea chefs put on their own dazzling show featuring imu-roasted kalua pig and the Island's most bountiful feast.

**Reservations Required | Ext. 5707
Tuesdays and Fridays**



Clambake

Dine al fresco, at the shores of Kauna'oa Bay. The amazing, long standing seafood feast is widely regaled as the Big Island's best!

**Reservations Required | Ext. 5707
December 20 and December 27**

Mauna Kea Salon

FESTIVE RENEWAL FOR HANDS & FEET

Indulge in the luxury of an aromatic effervescent soak, crafted in holiday inspired scents, followed by the smoothing touch of our coconut scrub. A Serene escape that restores softness and leaves you glowing for the season.

HOLIDAY HAIR RENEWAL

This season, let your hair shine as brightly as the holidays. Every service includes a nourishing deep conditioning treatment paired with a soothing 5 min scalp massage - restoring luster, strength and relaxation in one indulgent ritual.

**Open daily 8:00am-5:00pm
Beach Wing, 2nd Floor
Call ext. 5430 For availability.**

Sunday

Monday

Tuesday

Wednesday

DECEMBER 21	DECEMBER 22	DECEMBER 23	DECEMBER 24
6:00am E Ala E, Sunrise Ritual • Volleyball Court Area 7:30am Complimentary Canoe Paddle** 8:00am Seaside Yoga** 8:00am Kūpe'e Kukui: Traditional Candelnut Adornment*	6:30am Sunrise Guided Hike: Stories by the Sea* 7:30am Complimentary Canoe Paddle** 8:00am Seaside Yoga** 8:00am 'Ōlelo: Beginners Hawaiian Language*	6:00am E Ala E, Sunrise Ritual • Volleyball Court Area 7:00am SUP Yoga** • Weather Permitting 8:00am Seaside Yoga** 8:30am Imu Presentation • Lū'au Grounds	6:30am Sunrise Coastal Trail Jog* 7:30am 3rd Tee Swim** 8:00am Seaside Yoga** 8:00am 'Ohe Kāpala: Traditional Bamboo Stamping*
9:00am Keiki Club Starlight Sunday (\$)	9:00am Keiki Club Manta Monday (\$)	9:00am Keiki Club Tapa Tuesday (\$)	9:00am Keiki Club Wa'a Wednesday (\$)
10:00am Na Hulu: Feather Hairpiece* 10:00am Koi Fish Feeding • Koi Ponds, Lobby Level 10:45am Complimentary Canoe Paddle** 12:00pm Pareo: Learn to Tie a Sarong*	10:00am Lei Lāfi: Ti-Leaf Lei Making* 10:00am Golf Tips with the Pro • Golf Pro Shop 10:00am Koi Fish Feeding • Koi Ponds, Lobby Level 10:45am Complimentary Canoe Paddle** 12:00pm Oli: Traditional Hawaiian Chant*	10:00am Na Hulu: Feather Hairpiece* 10:00am Koi Fish Feeding • Koi Ponds, Lobby Level 10:45am Complimentary Canoe Paddle** 12:00pm Kūpe'e Kukui: Traditional Candelnut Adornment*	10:00am Niu Āpau: Things Made Of Niu (Coconut Frond)* 10:00am Golf Tips with the Pro • Golf Pro Shop 10:00am Koi Fish Feeding • Koi Ponds, Lobby Level 10:45am Complimentary Canoe Paddle**
1:00pm KEIKI KALIKIMAKA Cookie Decorating*	1:00pm KEIKI KALIKIMAKA Shave Ice*	1:00pm KEIKI KALIKIMAKA Face Painting and Henna Tattoo*	SANTA ARRIVES! 11:30am - 12:00pm Photo Ops with Santa 1:00pm KEIKI KALIKIMAKA Cookie Decorating*
4:30pm Coastal Core Flow • Parker Cottage	4:30pm Sunset Dance Beats • Parker Cottage	4:00pm Gingerbread House Competition • Kauna'oa Ballroom 4:30pm Sunset Guided Hike*	4:30pm Peak Power HIIT Nano • Parker Cottage
5:00-6:00pm BINGO • Kauna'oa Ballroom	5:30-6:30pm Celebrate Hanukkah • Kauna'oa Ballroom	5:10pm Lū'au Dinner & Show (\$) • Lū'au Grounds	
6:00pm / 6:45pm 7:30pm Manta Snorkel Adventure (\$)**	5:30pm Manta Talks • Manta Point 6:00pm / 6:45pm 7:30pm Manta Snorkel Adventure (\$)**	6:00pm / 6:45pm 7:30pm Manta Snorkel Adventure (\$)**	5:30pm Manta Talks • Manta Point 6:00pm / 6:45pm 7:30pm Manta Snorkel Adventure (\$)**

*Meet at Discovery Center Lanai. Located in the Beachfront Tower on Level 2.

Meet at Beach Club Hale. * Meet at the Hale Ho'omaha, south end of the Beachfront Tower.

****Meet at the 'Ulu Garden. Located in front of the Tennis Pro Shop.



'Ohana Movie Night

Pop-Up Restaurant and Family Fun

Enjoy a cozy evening under the stars. Gather on the Beachfront Lawn for a fun-filled family movie night featuring brick-oven pizza, popcorn, and classic theater treats!

January 1, 6:00pm



Hakone Japanese Buffet

Pop-Up Restaurant

Experience a fresh and artful Japanese buffet, featuring handcrafted rolls, local catch, and seasonal specialties.

Number 3, 6:00pm - 8:30pm
December 28 and December 29

New Year's Eve Celebration

7:00pm – 10:00pm

Join us for dinner and music on the Beachfront Lawn.

After Party

10:00pm – 12:30am

Included with Dinner or \$55 at the Door, Cash Bar Available

Head over to Kauna'oa Ballroom at 10pm, where the party continues with desserts and champagne.

At midnight, watch the fireworks over Kauna'oa Bay and welcome the New Year with a house sparkling toast and desserts.



Mele Kalikimaka Thursday

Friday

DECEMBER 25	DECEMBER 26
7:00am SUP Yoga** • Weather Permitting	6:30am Secret Beach Hike & Stretch*
7:30am Complimentary Canoe Paddle**	
8:00am Seaside Yoga**	8:00am Seaside Yoga**
8:00am 'Ōlelo: Beginners Hawaiian Language*	8:30am Imu Presentation • Lū'au Grounds
9:00am Keiki Club Tidepool Thursday (\$)	9:00am Keiki Club Food Friday (\$)
10:00am Oli: Traditional Hawaiian Chant*	10:00am Lau Kāpala: Traditional Foilage Stamping*
10:00am Koi Fish Feeding • Koi Ponds, Lobby Level	10:00am Koi Fish Feeding • Koi Ponds, Lobby Level
10:45am Complimentary Canoe Paddle**	10:45am Complimentary Canoe Paddle**
12:00pm Pareo: Learn to Tie a Sarong*	12:00pm Hula: Basic Hula Steps*
1:00pm KEIKI KALIKIMAKA Shave Ice*	1:00pm KEIKI KALIKIMAKA Face Painting and Henna Tattoo*
4:30pm Balance & Flow • Parker Cottage	4:30pm Sunset Slow Flow • Parker Cottage
	5:10pm Lū'au Dinner & Show (\$) • Lū'au Grounds
	6:00pm / 6:45pm 7:30pm Manta Snorkel Adventure (\$)**

Saturday	Sunday	Monday	Tuesday
DECEMBER 27	DECEMBER 28	DECEMBER 29	DECEMBER 30
6:30am Sunrise Guided Hike: Stories by the Sea*	6:00am E Ala E, Sunrise Ritual • Volleyball Court Area	6:30am Sunrise Guided Hike: Stories by the Sea*	6:00am E Ala E, Sunrise Ritual • Volleyball Court Area 7:00am SUP Yoga** • Weather Permitting
7:30am Complimentary Canoe Paddle**	7:30am Complimentary Canoe Paddle**	7:30am Complimentary Canoe Paddle**	
8:00am Seaside Yoga**	8:00am Seaside Yoga**	8:00am Seaside Yoga**	8:00am Seaside Yoga**
8:00am Ku'i 'Ai: Taro or Breadfruit Poi Making****	8:00am Kūpe'e Kukui: Traditional Candelnut Adornment*	8:00am 'Ōlelo: Beginners Hawaiian Language*	8:30am Imu Presentation • Lū'au Grounds
9:00am Keiki Club Seashell Saturday (\$)	9:00am Keiki Club Starlight Sunday (\$)	9:00am Keiki Club Manta Monday (\$)	9:00am Keiki Club Tapa Tuesday (\$)
10:00am Mea Pā'ani: Hawaiian Lawn Games*** 10:00am Mauna Kea Art Tour • Main Lobby 10:00am Koi Fish Feeding • Koi Ponds, Lobby Level 10:45am Complimentary Canoe Paddle**	10:00am Na Hulu: Feather Hairpiece* 10:00am Koi Fish Feeding • Koi Ponds, Lobby Level 10:45am Complimentary Canoe Paddle**	10:00am Lei Lā'i: Ti-Leaf Lei Making* 10:00am Golf Tips with the Pro • Golf Pro Shop 10:00am Koi Fish Feeding • Koi Ponds, Lobby Level 10:45am Complimentary Canoe Paddle**	10:00am Na Hulu: Feather Hairpiece* 10:00am Koi Fish Feeding • Koi Ponds, Lobby Level 10:45am Complimentary Canoe Paddle**
12:00pm Pū Kani: Blowing of the Conch Shell***	12:00pm Pareo: Learn to Tie a Sarong*	12:00pm Oli: Traditional Hawaiian Chant*	12:00pm Kūpe'e Kukui: Traditional Candelnut Adornment*
1:00pm KEIKI KALIKIMAKA Cookie Decorating*	1:00pm KEIKI KALIKIMAKA Shave Ice*	1:00pm KEIKI KALIKIMAKA Face Painting and Henna Tattoo*	1:00pm KEIKI KALIKIMAKA Cookie Decorating*
4:30pm Ignite: Jog & HIIT Fusion • Parker Cottage	4:30pm Coastal Core Flow • Parker Cottage	4:00pm Gingerbread House Competition • Kauna'oa Ballroom 4:30pm Sunset Dance Beats • Parker Cottage 5:30pm Manta Talks • Manta Point	4:30pm Sunset Guided Hike: * 5:10pm Lū'au Dinner & Show (\$) • Lū'au Grounds
5:00-6:00pm BINGO • Kauna'oa Ballroom			
5:30 - 8:30pm Clambake (\$) • Beachfront Lawn	6:00pm - 8:30pm Hakone Japanese Buffet (\$) • Number 3	6:00pm - 8:30pm Hakone Japanese Buffet (\$) • Number 3	
6:00pm / 6:45pm 7:30pm Manta Snorkel Adventure (\$)**	6:00pm / 6:45pm 7:30pm Manta Snorkel Adventure (\$)**	6:00pm / 6:45pm 7:30pm Manta Snorkel Adventure (\$)**	6:00pm / 6:45pm 7:30pm Manta Snorkel Adventure (\$)**

*Meet at Discovery Center Lanai. Located in the Beachfront Tower on Level 2.

Meet at Beach Club Hale. * Meet at the Hale Ho'omaha. Located at the south end of the Beachfront Tower.

****Meet at the 'Ulu Garden. Located in front of the Tennis Pro Shop.



Private Dining

Inquire about our stunning Vista Decks, Manta's Private Dining Room and other venues for your special family gatherings!

PrivateDining@
MaunaKeaResort.net



Large Party Dining

Parties of 8 or more may be seated at more than one table. We suggest a prix fixe (set) menu to expedite your service.

24-hour advance cancellation or \$50 per person fee applies.

Wednesday

Thursday

Friday

DECEMBER 31	JANUARY 01	JANUARY 02
6:30am Sunrise Coastal Trail Jog*	7:00am SUP Yoga** • Weather Permitting	6:30am Secret Beach Hike & Stretch*
7:30am 3rd Tee Swim**	7:30am Complimentary Canoe Paddle**	
8:00am Seaside Yoga**	8:00am Seaside Yoga**	8:00am Seaside Yoga**
8:00am 'Ohe Kāpala: Bamboo Stamping*	8:00am 'Ōlelo: Beginners Hawaiian Language*	8:30am Imu Presentation • Lū'au Grounds
9:00am Keiki Club Wa'a Wednesday (\$)	9:00am Keiki Club Tidepool Thursday (\$)	9:00am Keiki Club Food Friday (\$)
10:00am Niu Āpau: Things Made Of Niu (Coconut Frond)*	10:00am Oli: Traditional Hawaiian Chant*	10:00am Lau Kāpala: Traditional Foilage Stamping*
10:00am Golf Tips with the Pro • Golf Pro Shop		
10:00am Koi Fish Feeding • Koi Ponds, Lobby Level	10:00am Koi Fish Feeding • Koi Ponds, Lobby Level	10:00am Koi Fish Feeding • Koi Ponds, Lobby Level
10:45am Complimentary Canoe Paddle**	10:45am Complimentary Canoe Paddle**	10:45am Complimentary Canoe Paddle**
12:00pm Na Hulu: Feather Hairpiece*	12:00pm Pareo: Learn to Tie a Sarong*	12:00pm Hula: Basic Hula Steps*
1:00pm KEIKI KALIKIMAKA Shave Ice*	1:00pm KEIKI KALIKIMAKA Face Painting and Henna Tattoo*	1:00pm KEIKI KALIKIMAKA Cookie Decorating*
4:30pm Peak Power HIIT Nano • Parker Cottage	4:30pm Balance & Flow • Parker Cottage	4:30pm Sunset Slow Flow • Parker Cottage
7:00 - 10:00pm New Year's Eve Dinner Party (\$) • Beachfront Lawn		5:10pm Lū'au Dinner & Show (\$) • Lū'au Grounds
10:00pm - 12:30am After Party, Included with New Year's Eve Dinner, or pay at the door • Kauna'oa Ballroom	6:00pm 'Ohana Movie Night (\$) • Beachfront Lawn	
Midnight Fireworks over Kauna'oa Bay Hau'oli Makahiki Hou!	6:00pm / 6:45pm 7:30pm Manta Snorkel Adventure (\$)**	6:00pm / 6:45pm 7:30pm Manta Snorkel Adventure (\$)**

*Meet at Discovery Center Lanai. Located in the Beachfront Tower on Level 2.

Meet at Beach Club Hale. * Meet at the Hale Ho'omaha. Located at the south end of the Beachfront Tower.

****Meet at the 'Ulu Garden. Located in front of the Tennis Pro Shop.

Mauna Kea Dining

For all Evening Dining Reservations, call Ext. 5707.

See calendar for special holiday dining events.

Copper Bar Serves up shareable foods, beer, wine and hand crafted cocktails.

4:00pm – 10:00pm Cocktails

5:00pm – 10:00pm Dinner

5:30pm – 8:30pm Hula & Music

Hau Tree Beachside dining

10:30am – 5:00pm Lunch

Introducing **Hau Tree Cantina**, where the vibrant flavors of Latin-inspired cuisine meet the timeless beauty of Kauna'oa Bay.

5:00pm – 8:00pm Dinner

5:00pm – 8:00pm Live Music, Fridays

Closed New Years Eve

Lū'au A timeless Mauna Kea tradition.

Tuesdays and Fridays

5:10pm Seating Begins

5:45pm Dinner

6:15pm Show Begins

Manta Breakfast served open-air, taking full advantage of beautiful views of Kauna'oa Bay. Dinner: Pan-Pacific dishes with seasonal, local, & sustainable ingredients.

6:30am – 10:30am Breakfast

5:00pm – 9:00pm Dinner

Live Jazz Entertainment Nightly!

Mauna Kea Market Local products, sundries, and groceries, fresh-brewed Kona coffee, grab-and-go favorites, and the new Tropical Dreams Ice Cream Parlor featuring artisanal island flavors.

6:00am – 8:00pm

Number 3 Sandwiches, salads, fish tacos and cold beer on tap. Bocce ball and lawn games are available for keiki.

11:30am – 2:30pm Lunch

Engawa Savor a seasonal prix fixe dinner by Islander Sake, the Big Island's only sake distillery, where Hawaiian Aloha meets Japanese 'Omotenashi' hospitality.

5:30pm OR 7:30pm Monday - Saturday

Special Holiday Menus -

December 24, 25, 31, January 1 and 2

Reservations Required, Located at Hapuna Golf Course

Westin Hapuna Dining

Reservations Required.

For all Evening Dining Reservations, call Ext. 3430 or Ext. 3435.

Mauna Kea guests have room signing privileges.

Piko Coffee + Bar 100% Kona Coffee, refreshing drinks & light menu items.

6:00am – 10:00pm Coffee, Grab & Go

12:00pm – 10:00pm Cocktails, Appetizers

7:00pm – 9:00pm Live Music

Naupaka Beach Grill Salads, sandwiches, poke bowls, cocktails and local brews on tap.

10:30am – 5:00pm Lunch

5:00pm – 9:00pm Dinner

'Ikena Landing Daily breakfast offerings overlooking the ocean, dine-in or take-out.

6:30am – 10:30am Breakfast

6:30am – 11:00am Westin Weekend

Meridia Signature dining experience. Mediterranean-inspired cuisine with locally sourced ingredients

5:30pm – 9:00pm Dinner

Complimentary Evening Dining Shuttle

See Bell Desk

Departs Hapuna	Departs Mauna Kea
5:00pm	5:15pm
5:30pm	5:45pm
6:00pm	6:15pm
6:30pm	6:45pm
7:00pm	7:15pm
7:30pm	7:45pm
8:00pm	8:15pm
8:30pm	8:45pm
9:00pm	9:15pm
9:30pm	9:45pm
10:00pm	10:15pm



MAUNA KEA

BEACH HOTEL